

# BRUAN POLL DORSETS



**BRUAN 292-11**

Sire: Bruan 68-10

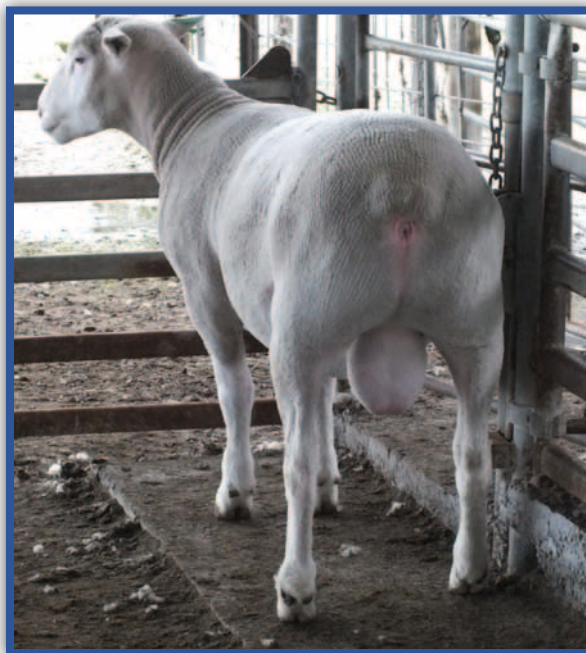
BWT	WWT	PWWT	PFAT	PEMD	PFEC	LAMB2020	CARCASS+
0.54	8.8	14.4	-0.5	2.6	6	113.53	202.74
Acc. 63	64	65	66	68	58		



**BRUAN 106-11**

Sire: Majadah 157-08

BWT	WWT	PWWT	PFAT	PEMD	PFEC	LAMB2020	CARCASS+
0.18	7.7	12.1	0.4	2.3	-16	111.9	184.28
Acc. 65	67	68	69	71	54		



**BRUAN 439-11**

Sire: Pepperton 352-07

BWT	WWT	PWWT	PFAT	PEMD	PFEC	LAMB2020	CARCASS+
0.47	9.6	15.1	-1.1	2.0	0	113.74	202.30
Acc. 83	70	70	68	70	60		

August 15 2012 Lambplan ASBV's

**BRUAN POLL DORSETS**

**SALE MONDAY 15TH OCTOBER 1.00PM**

**“Commercially Focused Seedstock & Prime Lamb Producers”**

David & Colleen Gordon 112 Blacks Rd Condah Vic. 3303

Enquires/inspections always welcome: 03 5578 2211 0417 142 863

Visit our website: [www.polldorset.org.au](http://www.polldorset.org.au) / Stud site Bruan



**Selling Agents:**

**Kerr & Co Livestock Hamilton**

Craig Pertzell 0408 723 952

Micheal Kerr 0438 528 246

Shaun Mansbridge 0400 428 444

**Elders Hamilton**

Aaron Millard 0407 782 286

Ross Milne 0408 057 558